

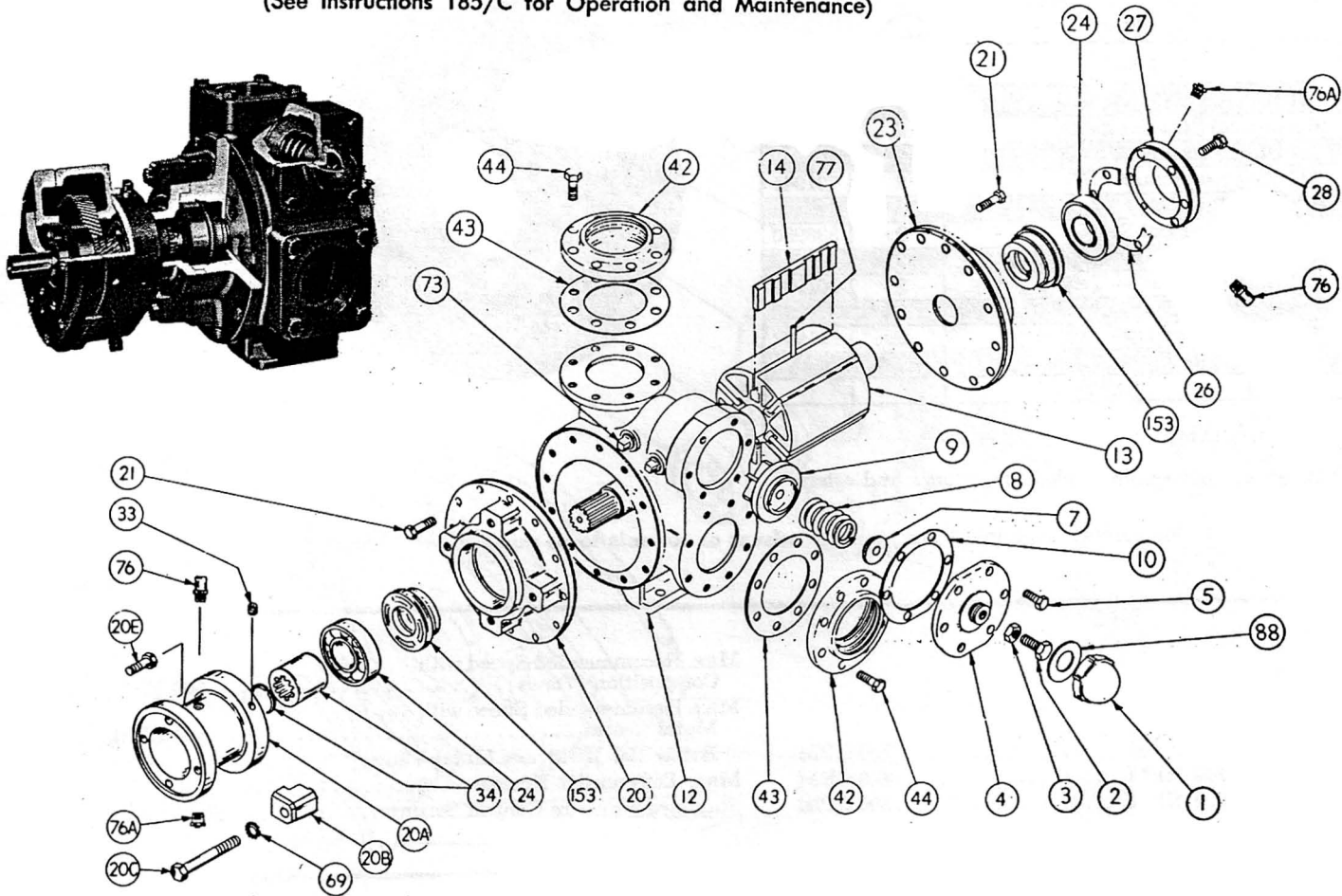
BLACKMER PARTS LIST

MODELS: **GX4, GX54**

(See Instructions 185/C for Operation and Maintenance)

PARTS LIST NO. 185/C7

Section Effective Replaces | 100 Feb. 1970 Page 112 dated 2-63



DON'T FORGET THE SERIAL NUMBER . . .

Would you like to be sure of getting the right material and have your order serviced faster? Then, also include the Pump Model Designation and the Pump Serial Number — both are stamped into a name-plate on the pump cylinder. Your serial number is a key to our records.

REF. NO.	PART NAME	NO. PARTS PER PUMP	PART NO.	REF. NO.	PART NAME	NO. PARTS PER PUMP	PART NO.	
1	Valve Cap	1	413955	20C	Clamp Capscrew	2	834011	
2	Adjusting Screw	1	436307	20E	Spool Capscrew	6	920491	
3	Locknut	1	436355	21	Head Capscrews	2	902111	
4	Valve Cover	1	411903	23	Head (Outboard)	1	031903	
5	Cover Capscrews	6	920353	24	Ball Bearing	2	904111	
7	Spring Guide	1	426355	26	Bearing Cover Gasket	1	386950	
8	Valve Spring (35-50 PSI)	1	476303	27	Bearing Cover	1	041905	
	Valve Spring (50-75 PSI)		476310	28	Bearing Cover Capscrews	6	920491	
	Valve Spring (76-110 PSI)		476304	33	Spool Setscrew	2	922200	
9	Pressure Control Valve	1	456315	34	Splined Coupling	1	906082	
10	Cover Gasket	1	531903	42	Flange	2	651903	
12	Pump Cylinder	1	021905	43	Flange Gasket	2	381903	
13	Rotor & Shaft	1	261923	44	Flange Capscrews	16	920530	
	Vane (Composition)		6	091944	69	Lockwasher	4	909635
	Vane (Bronze)			091905	73	Grease Plug	2	908195
	Vane (Cast Iron)		091907	76	Grease Fitting	2	317815	
20	Head (Inboard)	1	031904	76A	Grease Relief Fitting	2	701992	
20A	Spool	1	834012	77	Push Rod	3	121905	
20B	Clamp	1	834011	88	Cap Gasket	1	533903	

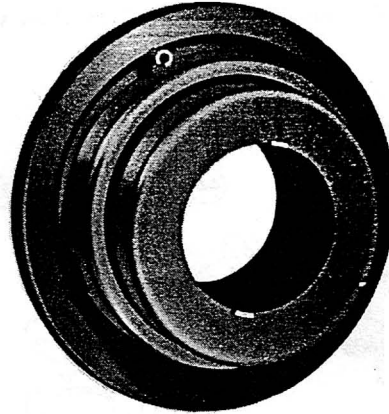
EC 091927 }
 STD 091929 } LAM. VANES, GX4 OLD STYLE

MECHANICAL SEAL

DON'T FORGET THE SERIAL NUMBER . . .

Would you like to be sure of getting the right material and have your order serviced faster? Then, also include the Pump Model Designation and the Pump Serial Number — both are stamped into a name-plate on the pump cylinder. Your serial number is a key to our records.

REF. NO.	PART NAME	NO. PARTS PER PUMP	PART NO.
	MECHANICAL SEALS GX		
153	Mechanical Seal Complete	2	336958
	"O" Ring Rotating	2	701933
	"O" Ring Stationary	2	701945
*	MECHANICAL SEALS GSX		
153	Teflon Mechanical Seal	2	336930
	"O" Ring Stationary — Buna N	2	701945
	"O" Ring Rotating — Teflon	2	701935
	Viton Mechanical Seal†	2	336932
	"O" Ring Stationary — Viton	2	711932
	"O" Ring Rotating — Viton	2	706901



†Viton O-Rings are not recommended for ketones and esters.

*When ordering parts for solvent mechanical seal, specify solvent or solvents to be pumped.

PUMP LIMITATIONS

Rated Capacity at 500 RPM 500 GPM
 Rated Capacity at 400 RPM 400 GPM
 Rated Capacity at 300 RPM 300 GPM

Max. Recommended Speed with
 Composition Vanes 500 RPM
 Max. Recommended Speed with
 Metal Vanes 400 RPM
 Below 400 RPM use Metal Vanes
 Max. Differential Pressure 100 PSI
 Standard Pressure Control Setting 50-75 PSI

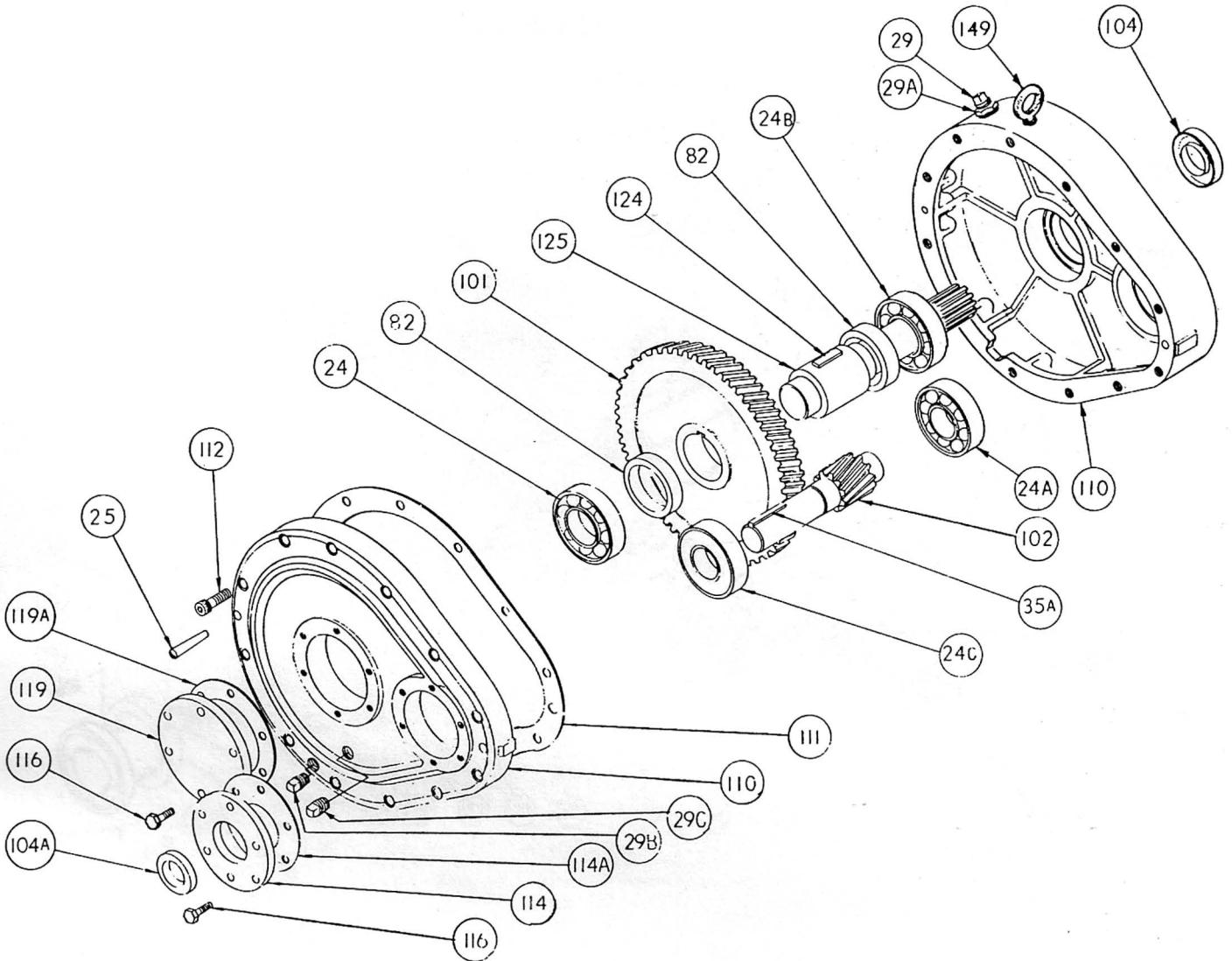
RATIO	RPM (1)	GEAR NO.	PINION NO.
3.5	500	919934	915134
4.3	400	919935	915135
5.7	300	919936	915136
7.7	225	919937	915137

Note (1) — Speed is based in 1750 input.

HORSEPOWER RATING — Rated in accordance with practices of A.G.M.A.

RATIO	1750 RPM MOTOR				1750 RPM ENGINE				1150 RPM MOTOR			
	RPM	HORSEPOWER			RPM	HORSEPOWER			RPM	HORSEPOWER		
		3 HRS.	3-10 HRS.	10-24 HRS.		3 HRS.	3-10 HRS.	10-24 HRS.		3 HRS.	3-10 HRS.	10-24 HRS.
3.5	500	30.0	30.0	26.9	500	30.0	26.9	21.4	335	29.8	23.8	19.1
4.36	400	30.0	24.1	19.3	400	24.1	19.3	16.0	265	21.4	17.1	13.6
5.77	300	22.0	17.6	14.1	300	17.6	14.1	11.7	200	14.9	11.9	9.5
7.71	225	15.5	12.4	9.9	225	12.4	9.9	8.2	150	10.7	8.6	6.9

REDUCER MODEL "B"



GEAR REDUCER

REF. NO.	PART NAME	NO. PARTS PER UNIT	PART NO.	REF. NO.	PART NAME	NO. PARTS PER UNIT	PART NO.
24	Bearing	1	903132	104A	Oil Seal	1	331909
24A	Bearing	1	903150	110	Body & Cover Assembly (with Gasket, Screws & Paper Pins)	1	894011
24B	Bearing (Shielded)	1	903131	111	Cover Gasket	1	814010
24C	Bearing (Shielded)	1	903151	112	Cover Capscrew	12	920355
25	Taper Pin	2	930160	114	Input Closure Plate	1	824011
29	Fill and Vent Plug	1	701988	114A	Input Closure Plate Gasket	1	814011
29A	Bushing	1	908794	116	Closure Plate Capscrew	12	920070
29B	Drain Plug	2	908100	119	Closure Plate (Blind)	1	824016
29C	Oil Level Plug	1	908195	119A	Closure Plate Gasket	1	814012
35A	Key	1	909177	124	Key	1	909179
82	Spacer Ring	2	374011	125A	Shaft, Splined for GX Models		704020
101	Gear	1	See Table	149	Eyebolt - Lifting	1	922450
102	Pinion and Shaft	1	See Table				
104	Oil Seal	1	331930				

DOVER CORPORATION / BLACKMER PUMP DIVISION

1809 CENTURY AVENUE S.W., GRAND RAPIDS, MICHIGAN 49509 • (616) 241-1611