

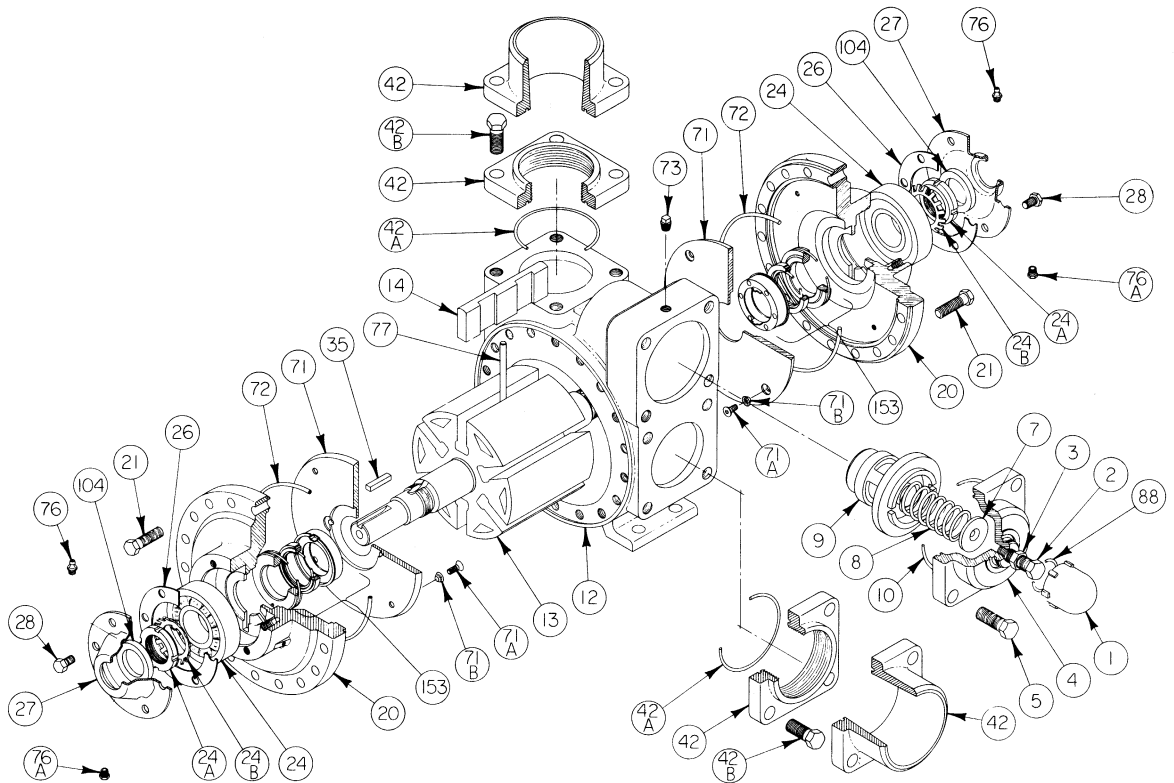
BLACKMER PUMP PARTS LIST

MODEL: LG4C

(See Instructions 585/ZG for Operation and Maintenance)

960431
PARTS LIST NO. 585/ZG1

Section Effective Replaces | 500 May 1985 March 1982



REF. NO.	PART NAME	NO. PARTS PER PUMP	PART NO.
1	Valve Cap	1	413952
2	Adjusting Screw	1	436310
3	Locknut	1	436355
4	Valve Cover	1	412001
5	Cover Capscrew	4	920663
7	Spring Guide	1	426355*
8	Valve Spring	1	476304*
9	Relief Valve	1	452001*
10	“O” Ring, Valve Cover	1	701946*
12	Cylinder	1	022000
13	Rotor & Shaft	1	262018
14	Vane-Duravane	6	092019*
	Vane-Laminate		092026
20	Head	2	032007
21	Head Capscrew	36	920532
24	Bearing	2	903172*
24A	Bearing Locknut	2	903523*
24B	Lockwasher	2	903524*
26	Bearing Cover Gasket	2	385125*
27	Bearing Cover-inboard	1	041815
27A	Bearing Cover-outboard	1	041817
28	Bearing Cover Capscrew	12	920286
35	Shaft Key	1	909183*

REF. NO.	PART NAME	NO. PARTS PER PUMP	PART NO.
42	Flange, 3" NPT	1-2	652012
	Flange, 3" Weld		652007
	Flange, 4" Weld		652005
42A	“O” Ring, Flange	2	701937*
42B	Capscrew, NPT Flange	8	920663
	Capscrew, Weld Flange		920640
71	Disc	2	062003*
71A	Disc Machine Screw	8	920007*
71B	Disc Lockwasher	8	909622*
72	“O” Ring, Head	2	701944*
73	Gage Plug	2	908195
76	Grease Fitting	2	317815
76A	Grease Relief Fitting	2	701992
77	Push Rod	3	122001*
88	“O” Ring - Valve Cap	1	701926*
104	Grease Seal	1	331908*
	Pump Repair Kit		892021

DISCONTINUED MODEL

*Pump Repair Kit Components

PARTS LIST NO. 585/ZG2

MECHANICAL SEAL

REF. NO.	PART NAME	NO. PARTS PER PUMP	PART NO.
153	Mechanical Seal Assembly	2	332050*
153A	Stationary Seat - Steel	2	332005
153B	Seal Face - Carbon	2	331867
153C	Seal Jacket Assembly	2	331886
153D	"O" Ring - Buna N	2	701934
153E	"O" Ring - Buna N	2	711912

MECHANICAL SEAL — MAPP Gas

REF. NO.	PART NAME	NO. PARTS PER PUMP	PART NO.
153	Mechanical Seal Assembly	2	332054
153A	Stationary Seat - Steel	2	332005
153B	Seal Face - Carbon	2	331867
153C	Seal Jacket Assembly	2	331886
153D	"O" Ring - Viton	2	701921
153E	"O" Ring - Viton	2	701962

