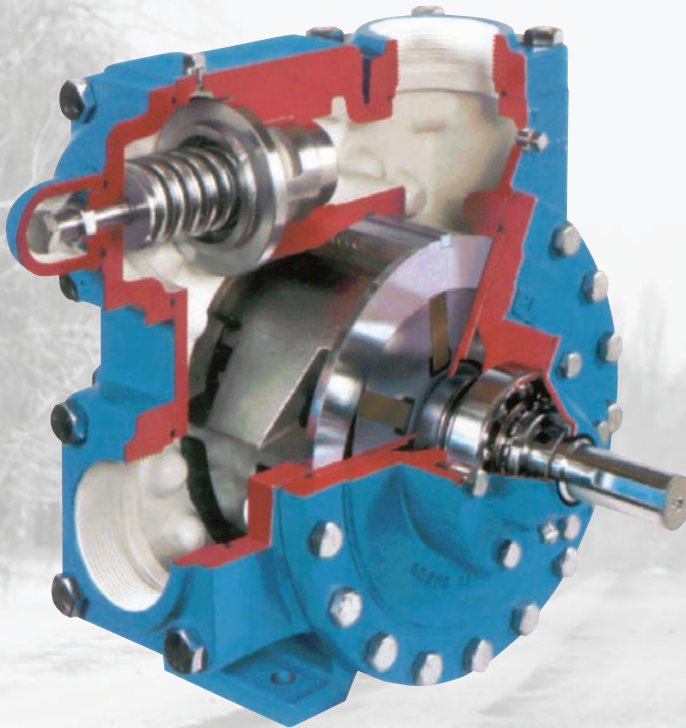




## CCLGLD4A Cold Climate 4" LPG Pump



Based on the Blackmer industry standard LGLD4 transfer pump, the CCLGLD4 is designed to handle the toughest Cold Climate applications.



Utilizing upgraded materials, the CCLGLD4A pump is good for cold weather installations. Minimum temperature ratings on standard ductile-iron pumps is  $-25^{\circ}\text{F}$  ( $-31^{\circ}\text{C}$ ), the CCLGLD4 pump is certified to  $-40^{\circ}\text{C/F}$ . Note: This pump is NOT UL Listed.

Following is a list of upgraded components:

- All pressure containing parts – casing, heads, RV cover and RV Cap
- Low Temp O-rings
- Low Temp Grease – Mobilegrease 28
- High-strength steel shaft
- Low Temp Capscrews – ASTM A320 L7

- All other parts (vanes, liner, discs, etc.) are the same as the standard LGLD4

Pump performance and dimensions are the same as the LGLD4 pump:

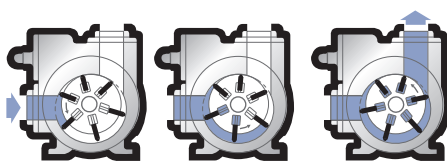
- Flow rate up to 270 gpm (1,022 L/min)
- Pump Speed: 640 rpm
- Differential Pressure: 125 psi (8.62 bar)
- Maximum Working Pressure: 350 psi (24.13 bar)
- Available with V-belt or gear reducer drives

### Applications

- Bulk plant and Terminal service
- Loading and offloading railcars, transports and bobtails
- High capacity LPG fueling
- Aerosol filling
- Vaporizer feed
- Can be used on propane, butane, and propane/butane mixes

### Features & Benefits:

- Certified to  $-40^{\circ}\text{C/F}$
- Designed for differential pressure of 125 psi (8.62 bar)
- Sliding vane, positive displacement design for consistent performance
- Dimensionally interchangeable with the LGLD4
- Up to 640 rpm operation
- Dual ended shaft for clockwise or counterclockwise rotation
- Patented cavitation suppression liner to reduce noise, vibration and wear
- Replaceable liner and discs
- Internal Relief Valve set to 150 psi (10.34 bar)
- Cold Temperature Ductile iron construction
- Flanged inlet and outlet connections
- Factory ISO-9001 certified



How Blackmer's sliding vane action works



# CCLGLD4A Cold Climate 4" LPG Pump

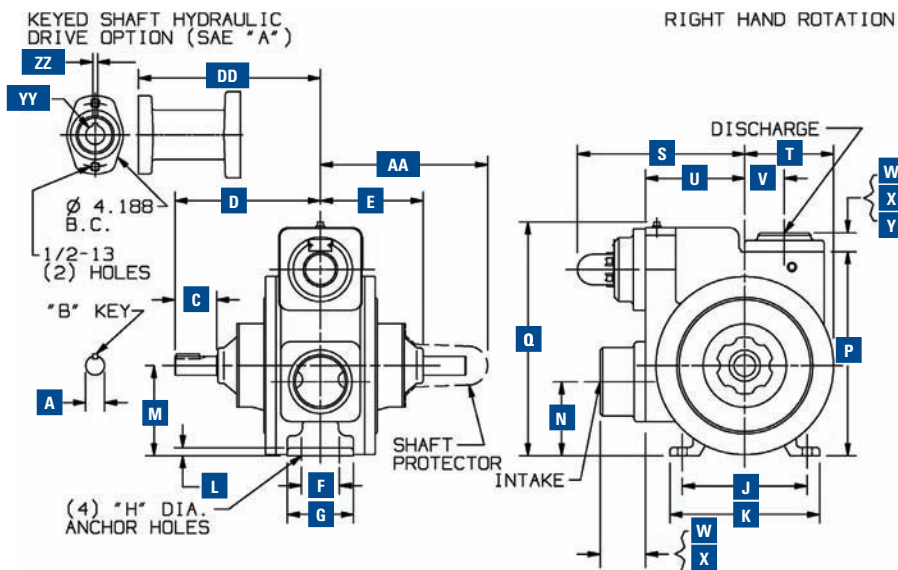
## Selection Data

| Assembled Pump Units |                                    | Pump Speed<br>rpm<br>(Using 1,750 rpm<br>Motor) | Approximate Delivery of Propane<br>at Differential Pressures and<br>Pump Speeds Shown <sup>1</sup> |       |                       |       | Maximum<br>Differential<br>Pressure | Maximum<br>Working<br>Pressure <sup>2</sup> | Drive Rating<br>(Maximum Horsepower<br>Drive Will Transmit) <sup>3</sup> |              |                  | Motor Size<br>For Mounting on<br>Standard Base <sup>4</sup> |                   |
|----------------------|------------------------------------|---|--|-------|-----------------------|-------|-------------------------------------|---|--|--------------|------------------|---|-------------------|
| Model                | Factory<br>Relief Valve<br>Setting |   | 50 psi<br>(3.45 bar)   |       | 100 psi<br>(6.89 bar) |       |                                     |   | psi<br>(bar)   | psi<br>(bar) | 0-3 Hour<br>Duty | 3-4 Hour<br>Duty  | 8-24 Hour<br>Duty |
|                      |                                    |   | gpm  | L/min | gpm                   | L/min |                                     |   |  |              |                  |   |                   |
| LGLD4-VB             | 150 psi<br>(10.34 bar)             | 640   | 270  | 1,022 | 220                   | 833   | 125<br>(8.62)                       | 350<br>(24.13)                              | 26.9   | 26.9         | 22.8             | 254T  | 284T              |
|                      |                                    | 520   | 220  | 833   | 180                   | 681   |                                     |   |  |              |                  |   |                   |
|                      |                                    | 420   | 170  | 644   | 130                   | 492   |                                     |   |  |              |                  |   |                   |
|                      |                                    | 340   | 130  | 492   | 90                    | 341   |                                     |   |  |              |                  |   |                   |
| LGLD4-HRB            | 150 psi<br>(10.34 bar)             | 640   | 270  | 1,022 | 220                   | 833   | 125<br>(8.62 bar)                   | 350<br>(24.13 bar)                          | 30.0   | 30.0         | 26.9             | 182T  | 286T              |
|                      |                                    | 500   | 210  | 795   | 170                   | 644   |                                     |   |  |              |                  |   |                   |
|                      |                                    | 400   | 160  | 606   | 120                   | 454   |                                     |   |  |              |                  |   |                   |
|                      |                                    |   |  |       |                       |       |                                     |   |  |              |                  |   |                   |

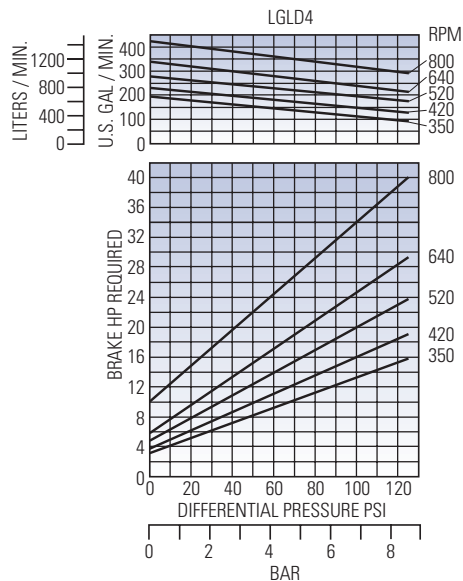
- 1 Check the pump's delivery and brake horsepower requirements in the performance curves on opposite page. See footnote with the curves which explains the factors that can cause delivery to vary.
- 2 Maximum rated working pressure is 350 psi (24.13 bar) for LPG and NH<sub>3</sub>.
- 3 Maximum horsepower that standard drive (V-belt/gearbox and base) will transmit.
- 4 Motors may be specified from Electric Motor Price List No. 10-MTRG-01

## Dimensions

| Model | Units | A       | B       | C       | D     | E      | F     | G     | H     | J     | K       | L       | M       | N     | Pump Weight |
|-------|-------|---------|---------|---------|-------|--------|-------|-------|-------|-------|---------|---------|---------|-------|-------------|
| LGLD4 | in.   | 1 1/4   | 5/16    | 2 3/4   | 9 5/8 | 6 3/4  | 2 1/2 | 4 3/8 | 5/8   | 8 1/4 | 9 15/16 | 9/16    | 5 15/16 | 4 7/8 | 205 lbs.    |
|       | mm    | 31.8    | 7.9     | 69.9    | 244.5 | 171.5  | 63.5  | 111.1 | 15.9  | 209.6 | 252.5   | 14.3    | 150.9   | 123.8 | 93 kg       |
|       |       | P       | Q       | S       | T     | U      | V     | W     | X     | Y     | AA      | DD      | YY      | ZZ    |             |
|       | in.   | 13 7/16 | 15 7/16 | 11 1/16 | 5 7/8 | 6 9/16 | 2 5/8 | 3     | 1 1/4 | 1 1/2 | 11 1/16 | 12 1/16 | 1 1/4   | 5/16  |             |
|       | mm    | 341.4   | 392.2   | 281.0   | 149.2 | 166.6  | 66.7  | 76.2  | 31.8  | 38.1  | 281.0   | 306.3   | 31.8    | 7.9   |             |



## Performance Curves



Process | Energy | Military & Marine  
PSG Grand Rapids  
1809 Century Avenue SW, Grand Rapids, MI 49503-1530 USA  
T 616.241.1611 • F 616.241.3752  
[blackmer.com](http://blackmer.com)



Authorized PSG® Partner: