

1 Introduction

The BioProTT™ FlowMCP is our latest addition to the BioProTT™ Product Range for industrial applications.



Figure 1: BioProTT™ FlowMCP Series

To enable an easy and convenient setup and integration into your process environment, all devices within the BioProTT™ FlowMCP Series come with a web interface. In order to gain access to and use the web interface, you must adjust some of your computer settings.

Please note:

The steps in this TechNote describe the steps needed when using Windows 10.

⇒ If you have another operating system, or if you encounter any problems when adjusting your settings, please contact em-tec GmbH.

2 Changing the Settings

To change your PC settings, follow these steps:

1. Open the Windows Settings and select „Network and Internet“.

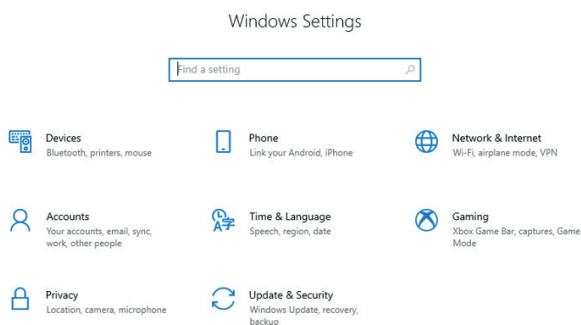


Figure 2: Open and select settings

2. Scroll down to „Advanced network settings“ and select “Change adapter settings“.

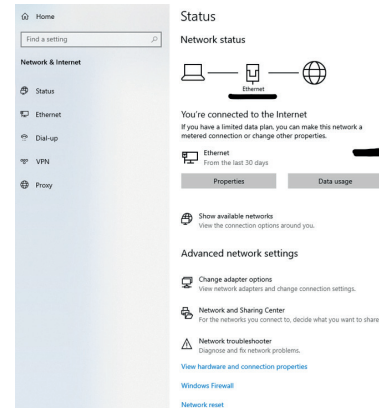


Figure 3: Change Adapter Settings

3. Right-click on the Ethernet field and select “properties“ in the dialog window.

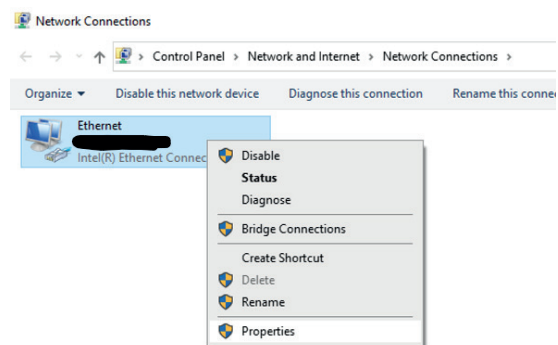


Figure 4: Ethernet: Select Properties

4. Choose the “Internet protocol, Version 4 (TCP/IPv4) and click “Properties“.

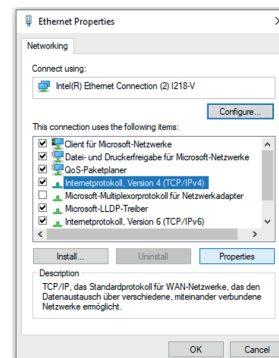


Figure 5: Choose Internet Protocol

5. Change the IP-Address to an address within the same network as the BioProTT™ FlowMCP.

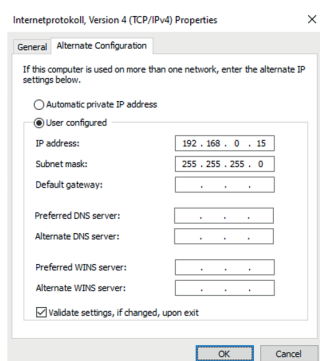


Figure 6: Change IP Address

Please note:

Do not change the IP address to the exact same address as the default IP Address of the MCP (192.168.0.12).

- ⇒ Instead, change it to e.g. 192.168.0.15.
- ⇒ Also: Do not change the subnet mask.

6. It is now possible to access the web interface in which the IP Address of the BioProTT™ FlowMCP can be changed to an IP Address of your network.

Please note:

Changing the IP to a random IP address might result in a loss of the connection and difficulties in finding the device again.

- ⇒ Make sure to change the IP address to an address that you know.

3 Contact

If there are any questions concerning the information in this document, or if you are having trouble at some point during the setup and installation of the BioProTT™ FlowMCP, please contact em-tec GmbH.

You can reach us at:

em-tec GmbH
Lerchenberg 20
86923 Finning
GERMANY

Phone: +49 8806 9236 0
Fax: +49 8806 9236 50
E-Mail: em-tec-info@psgdover.com
Internet: www.em-tec.de