



Model HL – Close-Coupled Configuration

PERFORMANCE

HL/3X2X8

Max. Flow Rate: 160 gpm

Max. Head: 275 ft.

Max. Working Temperature: 100° F

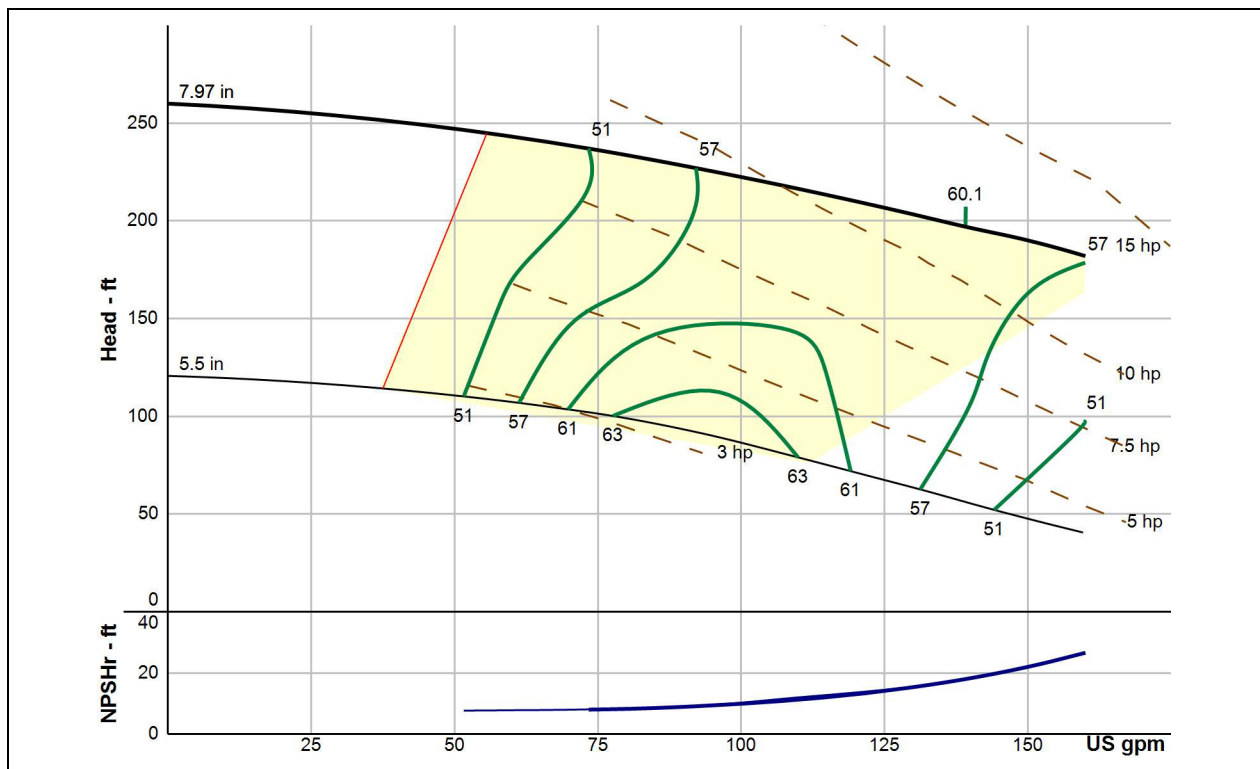
Max. Working Pressure: 110 psi

Max. Rated Speed: 3600 RPM

Max. Particle Size: 0.25" Diameter

Hydrotest Pressure: 165 psi

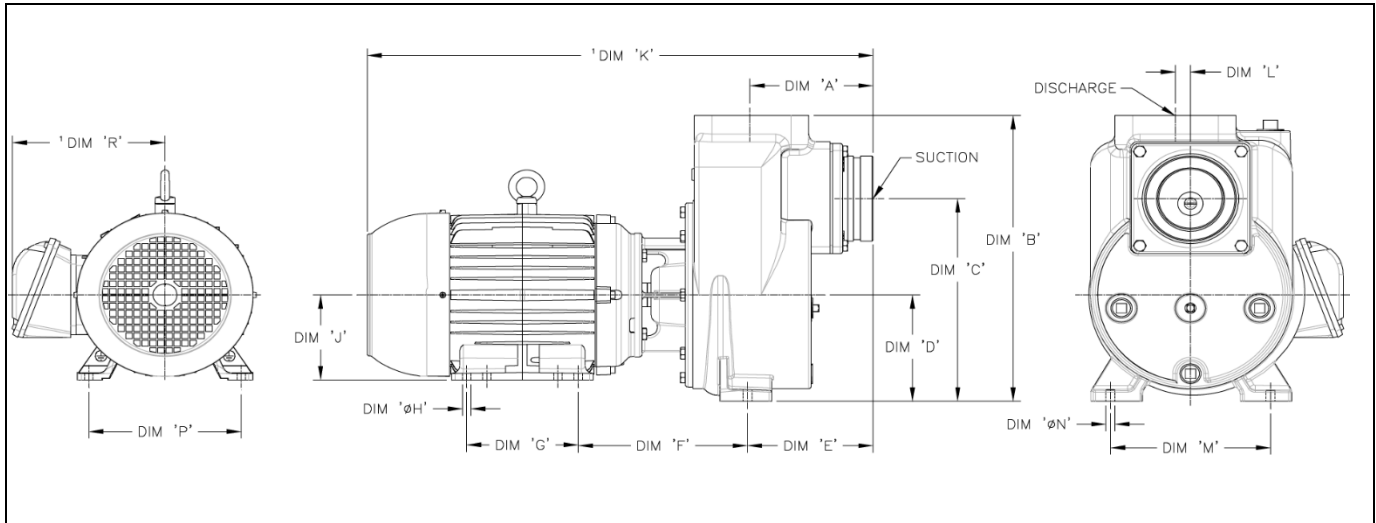
PERFORMANCE CURVE – HL/3X2X8, 3600 RPM



H SERIES – Model HL – Close-Coupled



DIMENSIONS (INCHES)

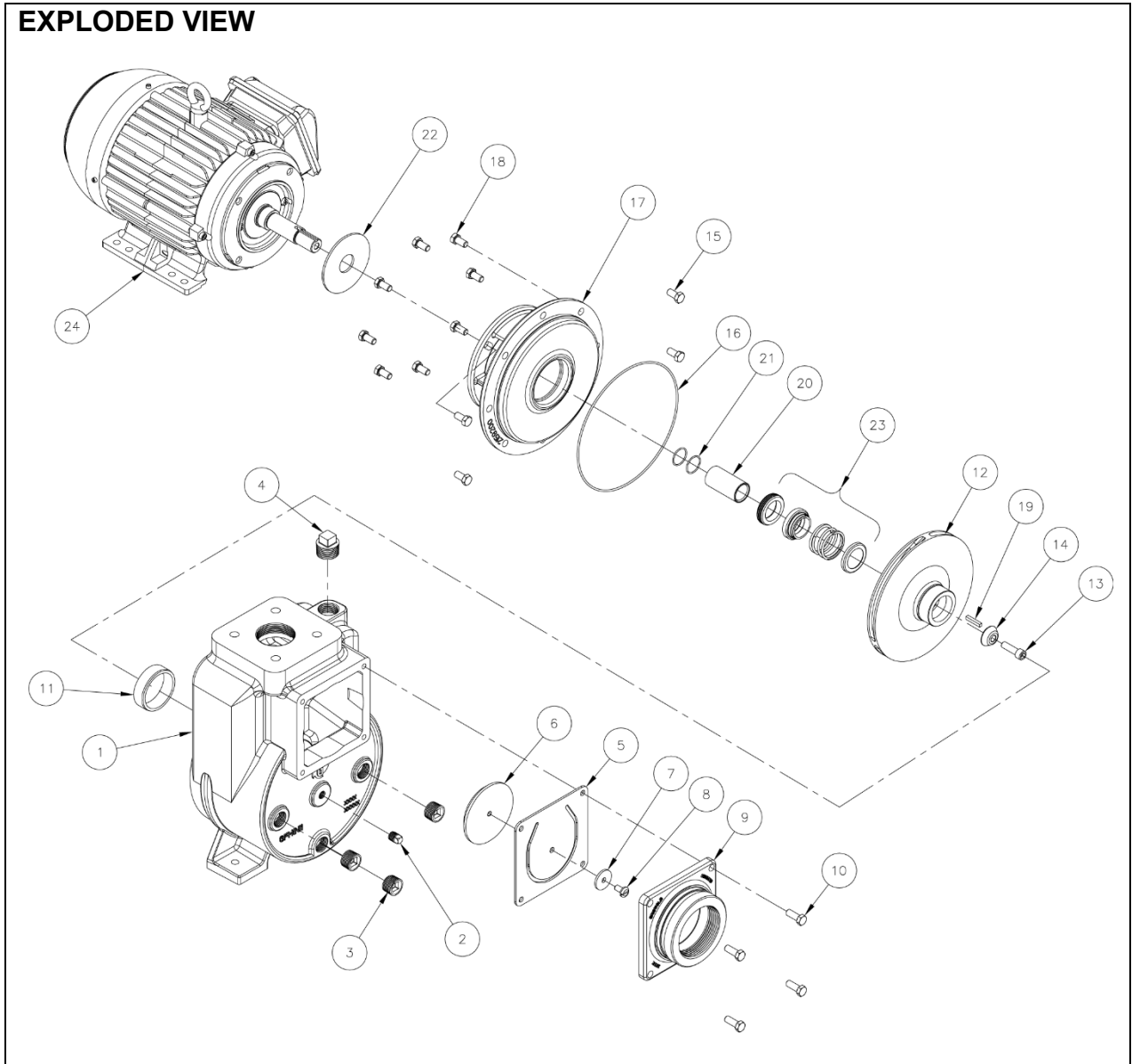


Pump Model	Motor Frame	Suction	Discharge	DIM "A"	DIM "B"	DIM "C"	DIM "D"	DIM "E"	DIM "F"	DIM "G"	DIM "øH"	DIM "J"	DIM "K"	DIM "L"	DIM "M"	DIM "øN"	DIM "P"	DIM "R"
3x2-8	182JM	3-8NPT / 4" VICTAULIC	2-11-1/2 NPT	6.07	15.13	10.73	5.63	6.19	8.33	4.50	.41	4.50	23.90	.75	7.88	9.88	7.50	7.46
3x2-8	184JM	3-8NPT / 4" VICTAULIC	2-11-1/2 NPT	6.07	15.13	10.73	5.63	6.19	8.33	5.50	.41	4.50	24.90	.75	7.88	9.88	7.50	7.52
3x2-8	213JM	3-8NPT / 4" VICTAULIC	2-11-1/2 NPT	6.07	15.13	10.73	5.63	6.19	9.08	5.50	.41	5.25	26.42	.75	7.88	9.88	8.50	8.57
3x2-8	215JM	3-8NPT / 4" VICTAULIC	2-11-1/2 NPT	6.07	15.13	10.73	5.63	6.19	9.08	7.00	.41	5.25	27.88	.75	7.88	9.88	8.50	8.57

¹Dimension may vary with motor model and manufacturer

LG2124 REV. A

EXPLODED VIEW



LG2126 REV. A

H SERIES – Model HL – Close-Coupled



PARTS LISTING

Compatible Motor Frame Family			HL 3x2-8		Material of Construction
Item	Description	Qty.	182JM, 184JM (JM1)	213JM, 215JM (JM2)	
			P/N		
Case Kit					
1	Case Kit ^{1,3}	1	GFH1N1K		Gray Iron, ASTM A48
2	Case Plug 1/4-18 MNPT	1	31005911		Steel
3	Case Plugs 3/4-14 MNPT	3	31006207		Steel
4	Case Plug 1-11-1/2 MNPT	1	31006307		Iron
5	Gasket, 4" Flapper	1	13009105		Rubber
6	Weight, Flapper	1	16001406		Steel, ASTM A36
7	Washer	1	14074009		Steel
8	Screw, Pan Hd, 5/16-18 x .63 Lg	1	14140313		300 Series Stainless Steel
9	Suction, Flange	1	H9N14V3		Gray Iron, ASTM A48
10	Suction Flange Bolt HHCS, 3/8-16 x 1.00 Lg	4	14129423SS		300 Series Stainless Steel
11	Case Wear Ring	1	8005100		Bismuth Tin Bronze (Lead Free)
Impeller Kit					
12	Impeller, Only ⁴	1	H2BZ		Copper, ASTM B854
	Impeller, Kit ⁵	1	H2BZK		Copper, ASTM B854
Back Pull Out Kit					
13	Impeller Bolt SHCS, 3/8-16 x 1.25 Lg	1	S14C375A25SH8A1		300 Series Stainless Steel
14	Impeller Washer	1	14412209		300 Series Stainless Steel
15	Bracket/Motor Bolts HHCS, 3/8-16 x .88 Lg	4	14129324		Steel – Grade 5
	Bracket/Motor Bolts HHCS, 1/2-13 x 1.00 Lg	4	14178701		Steel
16	Case/Bracket O-Ring -171 Buna	1	47017108		Buna-N
17	Bracket ^{2,3}	1	2159200K	2156909K	Ductile Iron, ASTM A395
18	Case/Bracket Bolts HHCS, 3/8-16 x .75 Lg	8	S01C375750WA2A2		Steel – Grade 5
19	Impeller Key	1	14412407		Steel
20	Sleeve, Kit ⁶	1	8222400K		Bismuth Tin Bronze (Lead Free)
21	Sleeve O-Ring -022 Buna	2	47002209		Buna-N
22	Deflector	1	22020408		Neoprene
23	Mechanical Seal	1	See mechanical seal list for P/N		
24	Motor	1	Contact factory for P/N		

LG2127 REV. A

¹ Case Kit includes item 2, 3, and 4.

² Bracket Kit includes item 15 and 22.

³ Part is available with epoxy coating of interior or interior+exterior. Specified part number is for uncoated part, contact factory for coated part numbers.

⁴ Part is available with epoxy coating. Append 'PC' to the indicated part number when referring to the coated part., e.g. H2BZPC, H2BZPC

⁵ Impeller Kit includes item 13, 14, and 19.

⁶ Sleeve Kit includes item 21.

