

PARTS LIST

PUMP

A6 A

Keep this parts lists with Installation, Operation and Maintenance Instructions.

To order the required spare parts, indicate the desired Reference(s).

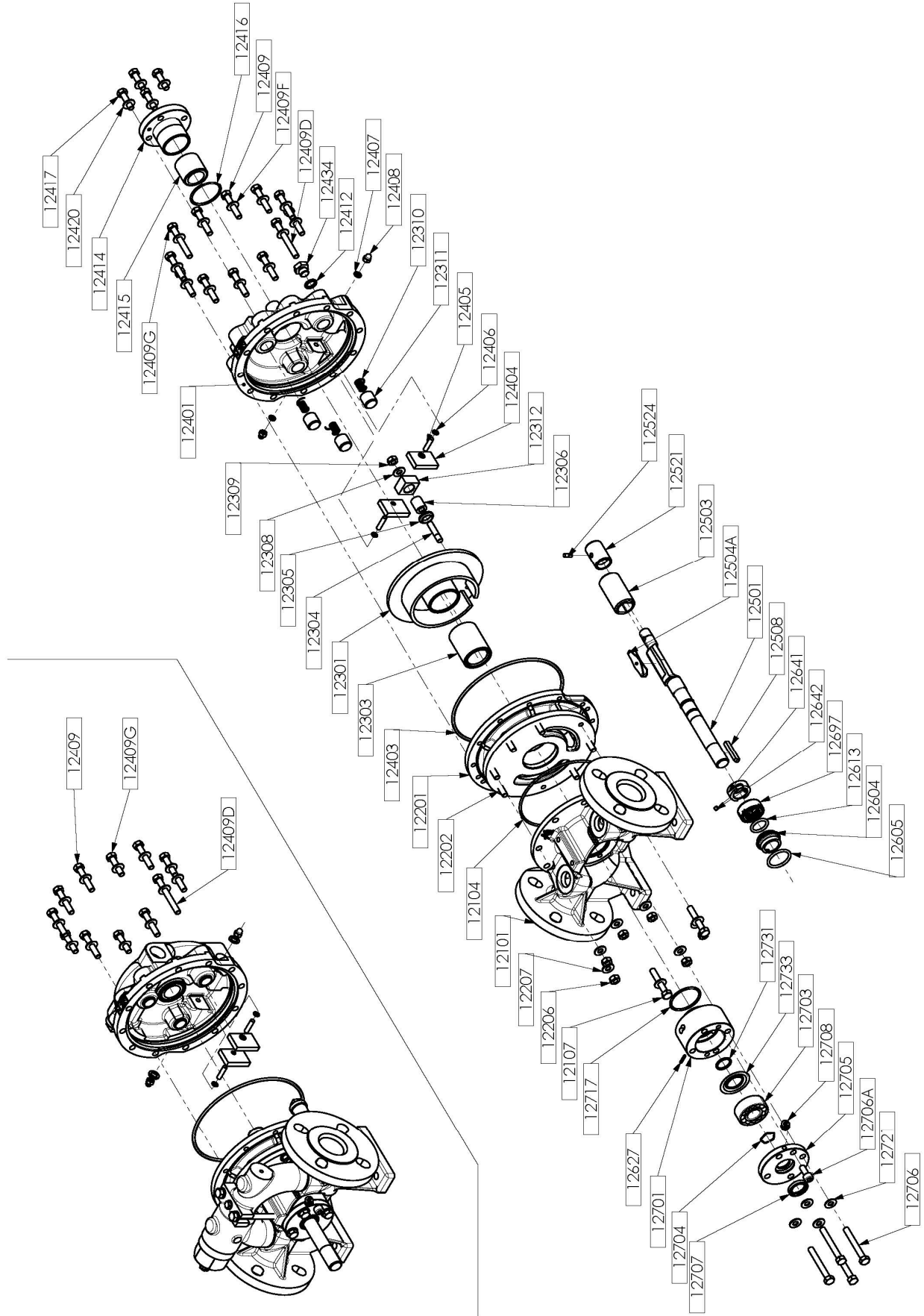
- ◆ Sets of parts or parts available to order.

Z.I. la Plaine des Isles - 2 rue des Caillottes F-89000 AUXERRE - France

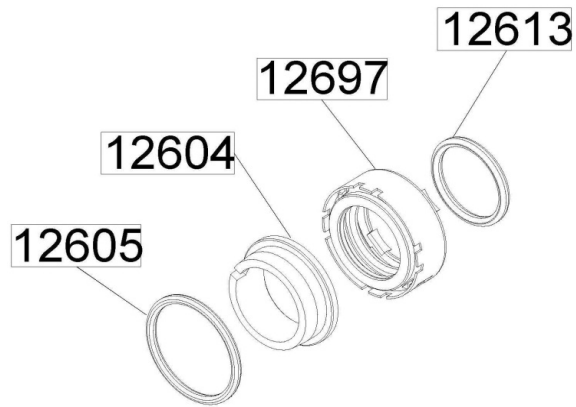
Tel : +33 (0)3 86 49 86 30 • Fax : +33 (0)3 86 49 87 17
contact.mouvex@psgdover.com • www.mouvex.com

A6 A

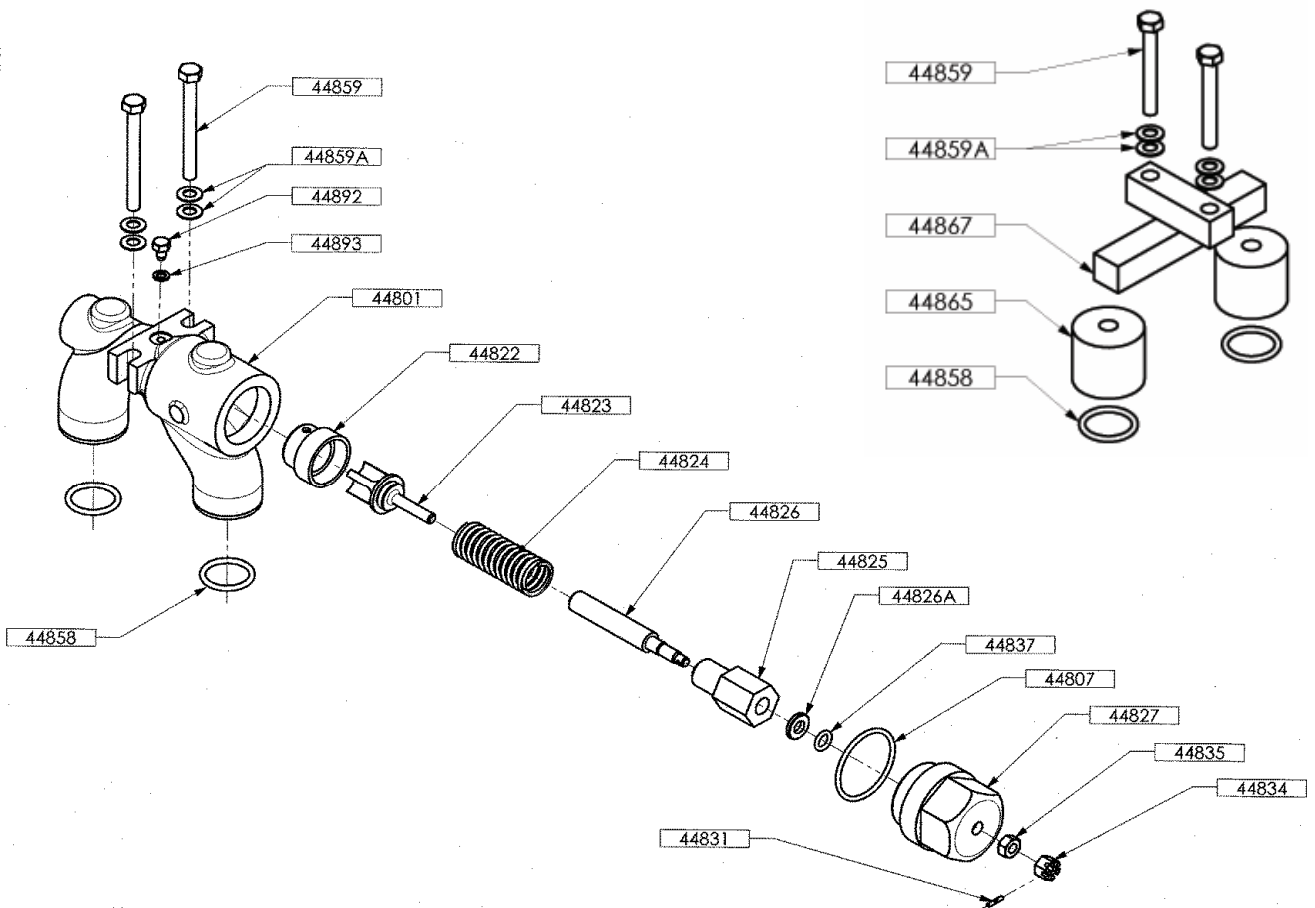
Heating jacket



Mechanical seal



Bypass & Stirrup



A6 A

* 1, 2, 4... : Quantity in equipment - (1), (2), (4)... : Quantity in kit

Item	Available	Description	Qty*	Ref.	Maintenance kit	Wear part
12097	◆	SET OF SCREWS-SEALS (PISTON INSPECTION)				
	◆	- FEP-FKM	1	AUX317005	■	
12097	◆	- FKM	1	AUX317004	■	
12097	◆	- FEP-FKM - JACKETED PUMP	1	AUX317084	■	
12097	◆	- FKM - JACKETED PUMP	1	AUX317083	■	
12403	◆	O-RING - FEP-FKM	1	AUX229880		●
12403	◆	O-RING - FKM	1	AUX229869		●
12409		SCREW	(10/7)			
12409D		SCREW	(1)			
12409F		WASHER	(12)			
12409G		SCREW	(1/4)			
12412		SEAL	(1)			●
12524		PIN	(1)			
12098	◆	FULL SET OF SCREWS	1	AUX317006		
12098	◆	FULL SET OF SCREWS - JACKETED PUMP	1	AUX317085		
12202		STUD	(6)			
12206		NUT	(6)			
12207		WASHER	(8)			
12409		SCREW	(10/7)			
12409D		SCREW	(1)			
12409F		WASHER	(12)			
12409G		SCREW	(1/4)			
12417		SCREW	(4)			
12420		WASHER	(4)			
12706		SCREW	(4)			
12706A		SCREW	(1)			
12721		WASHER	(4)			
12099	◆	SET OF FEP-FKM 'O' RING SEALS	1	AUX317008	■	
12099	◆	SET OF FKM 'O' RING SEALS	1	AUX317007	■	
12104		O-RING	(1)			●
12403	◆	O-RING - FEP-FKM	1	AUX229880		●
12403	◆	O-RING - FKM	1	AUX229869		●
12406		SEAL	(2)			●
12416		SEAL	(1)			●
12717		SEAL	(1)			●
12200	◆	CYLINDER, COMPLETE - FEP-FKM	1	AUX316628	■	
12200	◆	CYLINDER, COMPLETE - FKM	1	AUX316627	■	
12104		O-RING	(1)			●
12107		SCREW	(2)			
12201		CYLINDER	(1)			●
12202		STUD	(6)			
12206		NUT	(6)			
12207		WASHER	(8)			
12300	◆	COMPLETE PISTON - BRONZE BUSHING	1	AUX316998	■	
12300	◆	COMPLETE PISTON - CARBON BUSHING	1	AUX316997	■	
123010		PISTON + BLOCK PIN	(1)			●
12301		PISTON	(1)			●
12304	◆	SLIDE BLOCK SHAFT	1	AUX203913		●
12303	◆	PISTON BUSHING (CARBON)	1	AUX316609		●
12303	◆	PISTON BUSHING (BRONZE)	1	AUX230761		●
123980	◆	SLIDE BLOCK, COMPLETE	1	AUX316611		
12305		WASHER	(1)			
12306		BUSHING	(1)			●
12308		WASHER	(1)			
12309		PISTON NUT	(1)			
12312		SLIDE BLOCK	(1)			●

A6 A

* 1, 2, 4... : Quantity in equipment - (1), (2), (4)... : Quantity in kit

Item	Available	Description	Qty*	Ref.	Maintenance kit	Wear part
12400	◆	COMPLETE FRONT COVER - FEP-FKM	1	AUX316632		
12400	◆	COMPLETE FRONT COVER - FKM	1	AUX316631		
12400	◆	COMPLETE FRONT COVER WITH JACKET - FEP-FKM	1	AUX316634		
12400	◆	COMPLETE FRONT COVER WITH JACKET - FKM	1	AUX316633		
12399	◆	GUIDE BLOCK, COMPLETE	1	AUX317081		
12310		SPRING	(3)			
12311		PUSHER	(3)			
12401		FRONT COVER	(1)			
12402	◆	SLIDE BLOCK PADS SET COMPLETE - FEP-FKM	1	AUX316630		
12402	◆	SLIDE BLOCK PADS SET COMPLETE - FKM	1	AUX316629		
12404		GUIDE	(2)			
12405		STUD	(2)			
12406		SEAL	(2)			●
12407		SEAL	(2)			●
12408		BLIND NUT	(2)			
12403	◆	O-RING - FEP-FKM	1	AUX229880		●
12403	◆	O-RING - FKM	1	AUX229869		●
12409		SCREW	(10/7)			
12409D		SCREW	(1)			
12409F		WASHER	(12)			
12409G		SCREW	(1/4)			
12411	◆	FRONT COVER DRAIN PLUG + SEAL	1	AUX316359		
12412		SEAL	(1)			●
12434		PLUG	(1)			
12462A		PLUG (FOR HEATING JACKET)	(1)			
12462B		PLUG (FOR HEATING JACKET)	(1)			
44808		BYPASS ORIENTATION PLATE	(1)			
44809		PIN	(2)			
12413	◆	FRONT COVER BEARING COMPLETE - BRONZE BUSHING - FEP-FKM	1	AUX317000		
12413	◆	FRONT COVER BEARING COMPLETE - BRONZE BUSHING - FKM	1	AUX316999		
12413	◆	FRONT COVER BEARING COMPLETE - CARBON BUSHING - FEP-FKM	1	AUX316626		
12413	◆	FRONT COVER BEARING COMPLETE - CARBON BUSHING - FKM	1	AUX316625		
12414		FRONT COVER BEARING	(1)			
12415	◆	BEARING BUSHING - CARBON	1	AUX316608		●
12415	◆	BEARING BUSHING - BRONZE	1	AUX230762		●
12416		SEAL	(1)			●
12417		SCREW	(4)			
12420		WASHER	(4)			
12500	◆	SHAFT COMPLETE	1	AUX316610		
12501	◆	SHAFT	1	AUX229847		
12508	◆	KEY	1	AUX203854		
12515	◆	COMPLETE SLEEVE	1	AUX317057		
12521		SLEEVE	(1)			
12524		PIN	(1)			
12598	◆	PISTON BEARING, COMPLETE	1	AUX317058		
12503		PISTON BEARING	(1)			●
12504A	◆	SPRING	1	AUX201397		

A6 A

* 1, 2, 4... : Quantity in equipment - (1), (2), (4)... : Quantity in kit

Item	Available	Description	Qty*	Ref.	Maintenance kit	Wear part
12600A *	◆	MECHANICAL SEAL - MS C_S_FEP-FKM D22 A6 A	1	AUX321556	■	
12600A *	◆	MECHANICAL SEAL - MS C_S_FKM D22 A6 A	1	AUX321555	■	
12600A *	◆	MECHANICAL SEAL - MS T_T_FEP-FKM D22 A6 A	1	AUX321553	■	
12600A *	◆	MECHANICAL SEAL - MS T_T_FKM D22 A6 A	1	AUX321552	■	
12604		STATIONARY SEAL FACE	(1)			●
12619		BUSHING FOR FEP-FKM MECHANICAL SEAL	(1)			
12640	◆	DRIVER, COMPLETE D22 (FOR MOUVEX MECHANICAL SEAL)	1	AUX317003		
12641		DRIVER	(1)			
12642		SCREW	(2)			
12697		ROTATING PART	(1)			●
12699	◆	SET OF MECHANICAL SEAL SEALS - FEP-FKM	1	AUX316613		
12699	◆	SET OF MECHANICAL SEAL SEALS - FKM	1	AUX316612		
12605		SEAL	(1)			●
12613		SEAL	(1)			●
12600B	◆	SHAFT SEALS STANDARDIZED IN ACCORDANCE M7N_22 C CSSF	1	AUX315976	■	●
12600B	◆	SHAFT SEALS STANDARDIZED IN ACCORDANCE M7N_22 C CSCSF	1	AUX315978	■	●
12600B	◆	SHAFT SEALS STANDARDIZED IN ACCORDANCE M7N_22 C CSSP	1	AUX319795	■	●
12600B	◆	SHAFT SEALS STANDARDIZED IN ACCORDANCE M7N_22 C CSCSP	1	AUX319796	■	●
12700	◆	BEARING HOLDER PGSN - FEP-FKM	1	AUX316624		
12700	◆	BEARING HOLDER PGSN - FKM	1	AUX316623		
12627	◆	PIN	1	AUX200117		
12701		BEARING CAGE	(1)			
12703A	◆	BEARING & RING	1	AUX316620		
12703		BALL BEARING	(1)			●
12731		WASHER	(1)			
12733		NILOS RING	(1)			
12705		BEARING COVER	(1)			
12708		GREASE NIPPLE	(1)			
12797	◆	BEARING SCREWS AND GASKET SET - FEP-FKM	1	AUX316622	■	
12797	◆	BEARING SCREWS AND GASKET SET - FKM	1	AUX316621	■	
12704		RING	(1)			
12706		SCREW	(4)			
12706A		SCREW	(1)			
12707		LIP SEAL	(1)			
12717		SEAL	(1)			●
12721		WASHER	(4)			
12849	◆	COMPLETE STIRRUP - FEP-FKM	1	AUX316607		
12849	◆	COMPLETE STIRRUP - FKM	1	AUX316596		
44858	◆	SEAL FEP-FKM	2	AUX224183		●
44858	◆	SEAL FKM	2	AUX200725		●
44859		SCREW	(2)			
44859A		WASHER	(4)			
44865		PLUG	(2)			
44867		STIRRUP	(1)			

* MS : Mouvex Seal T : Tungsten carbide C : Carbon S : Stainless steel

A6 A

* 1, 2, 4... : Quantity in equipment - (1), (2), (4)... : Quantity in kit

Item	Available	Description	Qty*	Ref.	Maintenance kit	Wear part
12820	◆	SINGLE RELIEF VALVE, COMPLETE - C10 - FEP-FKM	1	AUX316593		
12820	◆	SINGLE RELIEF VALVE, COMPLETE - C3 - FEP-FKM	1	AUX316591		
12820	◆	SINGLE RELIEF VALVE, COMPLETE - C3 - FKM	1	AUX316584		
12820	◆	SINGLE RELIEF VALVE, COMPLETE - C5 - FEP-FKM	1	AUX316592		
12820	◆	SINGLE RELIEF VALVE, COMPLETE - C5 - FKM	1	AUX316585		
12820	◆	SINGLE RELIEF VALVE, COMPLETE - C10 - FKM	1	AUX316586		
44820A		INTERNAL RELIEF VALVE	(1)			
44801		BYPASS BODY	(1)			
44822		VALVE SEAT	(1)			
44823		COMPLETE VALVE	(1)			
44825		SPRING GUIDE	(1)			
44826		ADJUSTING SCREW	(1)			
44826A		WASHER	(1)			
44827	◆	BYPASS CAP	1	AUX241250		
44831		PIN	(1)			
44834		NUT	(1)			
44835		NUT	(1)			
44892		SCREW	(1)			
44893		SEAL	(1)			
44824	◆	SPRING N°3	1	AUX201182		
44824	◆	SPRING N°4	1	AUX201183		
44859		SCREW	(2)			
44859A		WASHER	(4)			
44899	◆	SET OF SEALS FOR RELIEF VALVE C - FEP-FKM	1	AUX316590		
44899	◆	SET OF SEALS FOR RELIEF VALVE C - FKM	1	AUX316589		
44807		SEAL	(1)			●
44837		SEAL	(1)			●
44858	◆	SEAL FEP-FKM	2	AUX208311		●
44858	◆	SEAL FKM	2	AUX200725		●
44824B	◆	SPRING + SEAL - RELIEF VALVE 3 BAR - FEP-FKM	1	AUX317012		
44824B	◆	SPRING + SEAL - RELIEF VALVE 3 BAR - FKM	1	AUX317009		
44824B	◆	SPRING + SEAL - RELIEF VALVE 5 BAR 10 BAR - FEP-FKM	1	AUX317013		
44824B	◆	SPRING + SEAL - RELIEF VALVE 5 BAR 10 BAR - FKM	1	AUX317010		
44807		SEAL	(1)			●
44824	◆	SPRING N°3	1	AUX201182		
44824	◆	SPRING N°4	1	AUX201183		
44898B	◆	PRESSURE SCREW ASSEMBLY + SEALS PARA RELIEF VALVE - 10 BAR - FEP-FKM	1	AUX317016		
44898B	◆	- 10 BAR - FKM	1	AUX317014		
44898B	◆	- 3 BAR 5 BAR - FEP-FKM	1	AUX317015		
44898B	◆	- 3 BAR 5 BAR - FKM	1	AUX317011		
44807		SEAL	(1)			●
44825		SPRING GUIDE	(1)			
44826		ADJUSTING SCREW	(1)			
44826A		WASHER	(1)			
44831		PIN	(1)			
44834		NUT	(1)			
44835		NUT	(1)			
44837		SEAL	(1)			●