



P.L. : 1013-B01

Effective
Replaces

January 2025
New

PARTS LIST

PUMPS

G-FLO 1 S - G-FLO 2 S - G-FLO 3 S

H-FLO 1 S - H-FLO 2 S - H-FLO 3 S

Keep this parts lists with Installation, Operation and Maintenance Instructions.

To order the required spare parts, indicate the desired Reference(s).

- ◆ Sets of parts or parts available to order.

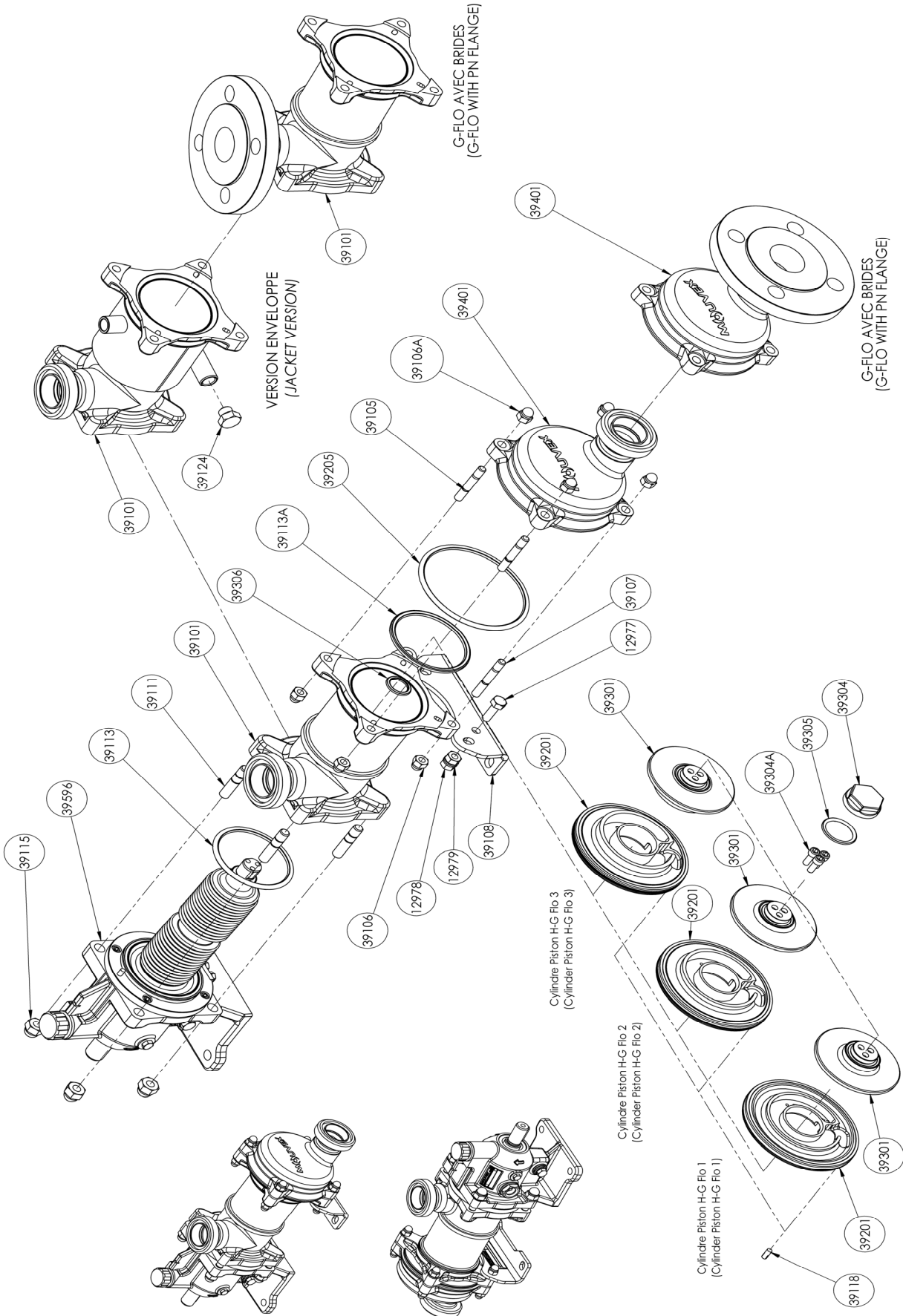
CVT : FEP encapsulated FKM

Z.I. la Plaine des Isles - 2 rue des Caillottes F-89000 AUXERRE - France

Tel : +33 (0)3 86 49 86 30 • Fax : +33 (0)3 86 49 87 17
contact.mouvex@psgdover.com • www.mouvex.com

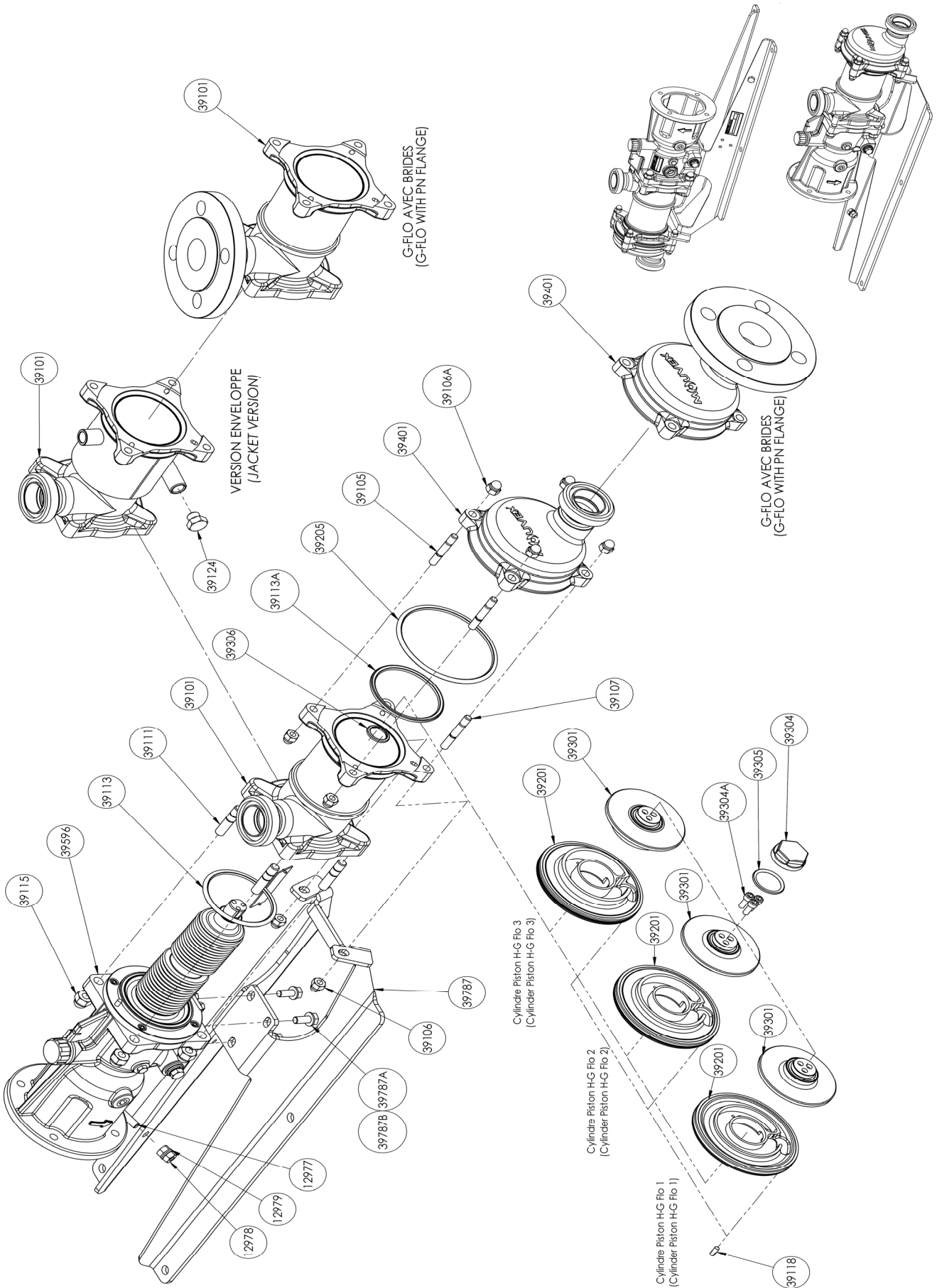
G-FLO 1 S - G-FLO 2 S - G-FLO 3 S - H-FLO 1 S - H-FLO 2 S - H-FLO 3 S

Bare shaft pump



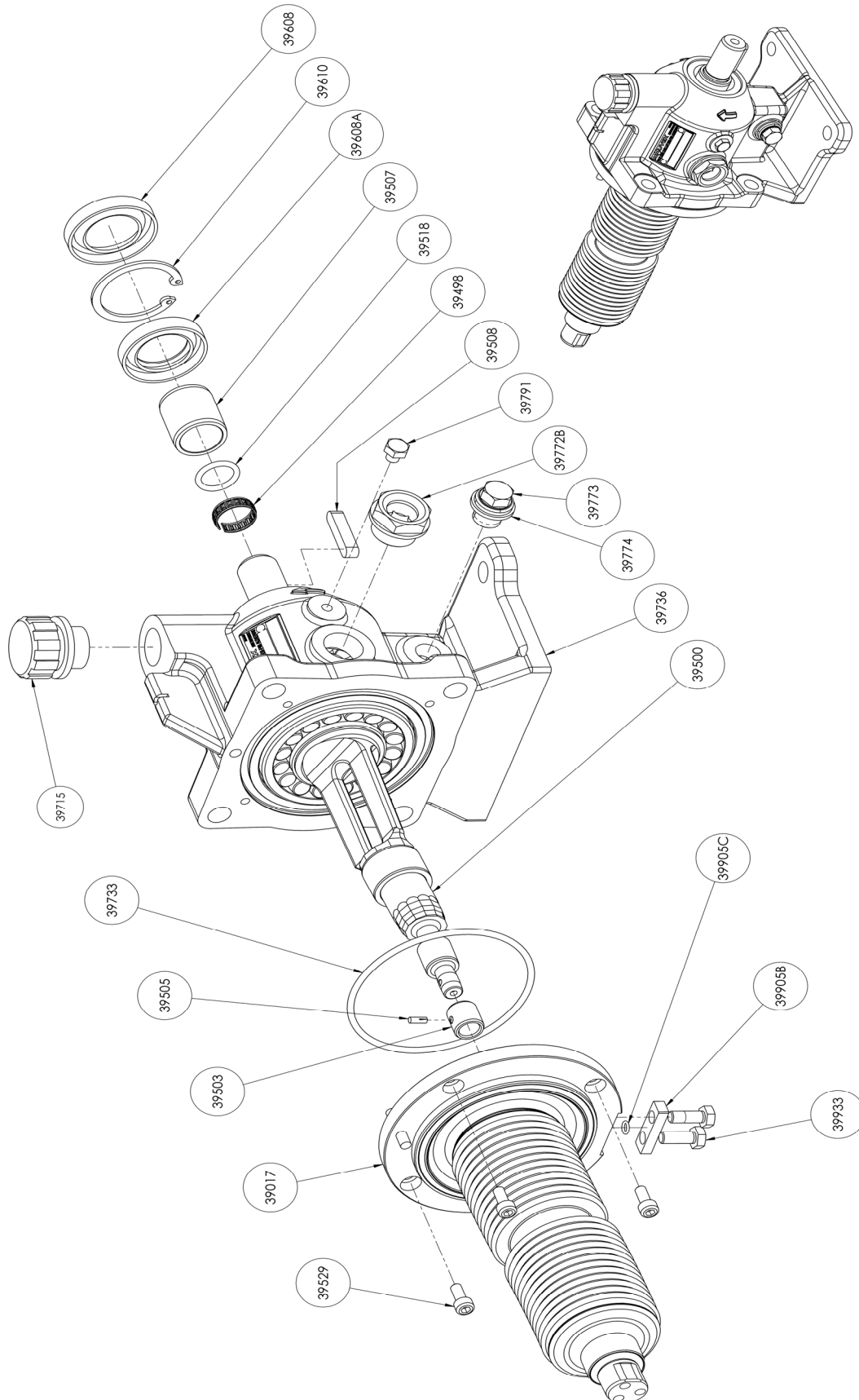
G-FLO 1 S - G-FLO 2 S - G-FLO 3 S - H-FLO 1 S - H-FLO 2 S - H-FLO 3 S

Motor flange pump



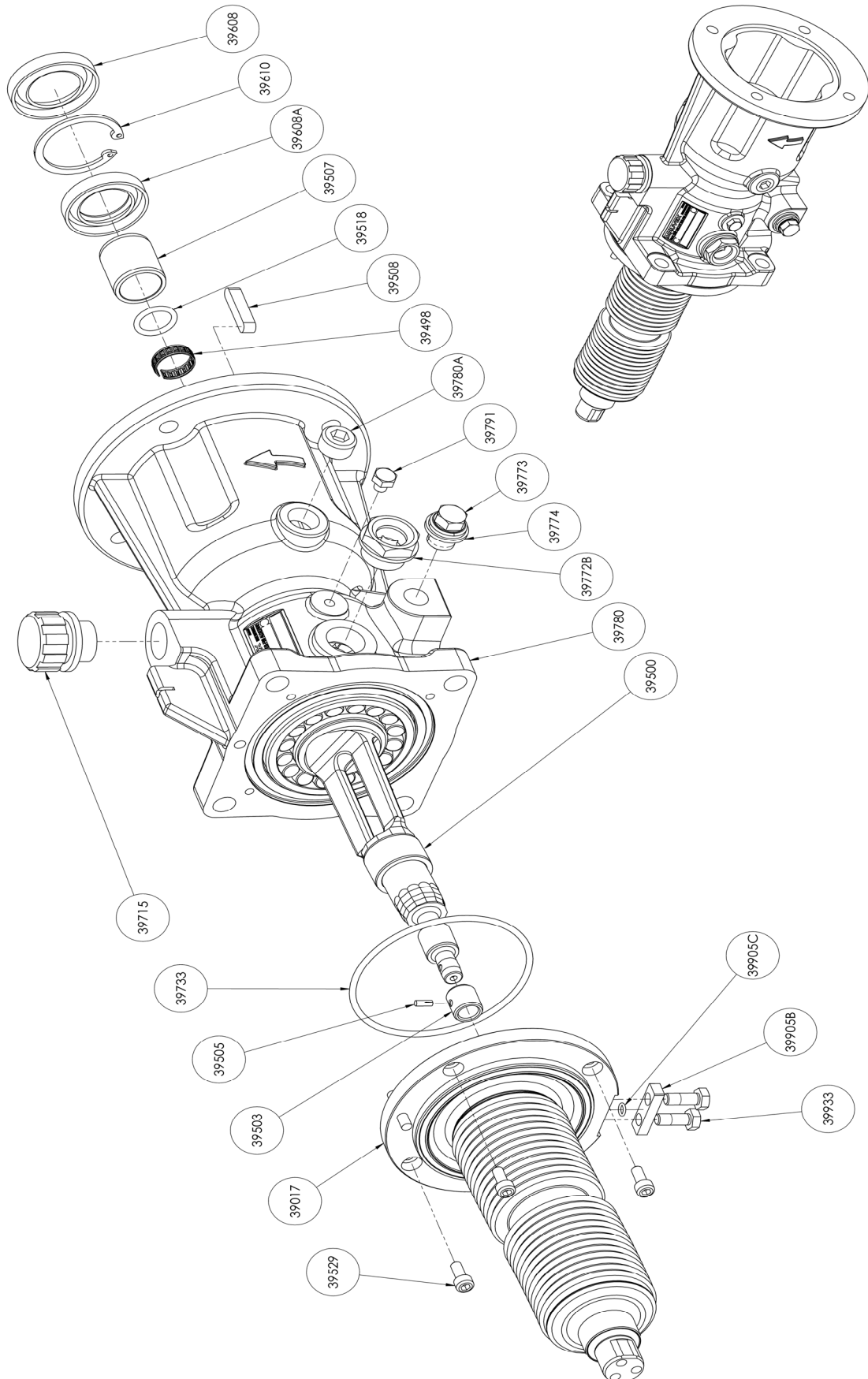
G-FLO 1 S - G-FLO 2 S - G-FLO 3 S - H-FLO 1 S - H-FLO 2 S - H-FLO 3 S

**Transmission
for bare shaft pump**



G-FLO 1 S - G-FLO 2 S - G-FLO 3 S - H-FLO 1 S - H-FLO 2 S - H-FLO 3 S

**Transmission
for motor flange pump**



G-FLO 1 S - G-FLO 2 S - G-FLO 3 S

* 1, 2, 4... : Quantity in equipment - (1), (2), (4)... : Quantity in kit

Item	Available	Description	Qty*	Ref.	Maintenance kit	Wear part
39100	◆	MAIN BODY G-FLO 1_2_3 S - PN16 DN40	1	AUX322012		
39100	◆	MAIN BODY G-FLO 1_2_3 S - PN20 DN40	1	AUX322013		
39100	◆	JACKETED MAIN BODY G-FLO 1_2_3 S - PN16 DN40	1	AUX322019		
39100	◆	JACKETED MAIN BODY G-FLO 1_2_3 S - PN20 DN40	1	AUX322020		
39101		MAIN BODY	(1)			
39124		PLUG (JACKETED PUMP)	(1)			
39110	◆	SCREWS SET FOR MAIN BODY_FRONT COVER G_H-FLO 1_2_3 S	1	AUX321992		
39105		STUD	(2)			
39106		BLIND NUT	(8)			
39107		STUD	(2)			
39111		STUD	(4)			
39115		BLIND NUT	(4)			
39200	◆	SET CYLINDER_PISTON G_H-FLO 1 S	1	AUX322090	■	
39200	◆	SET CYLINDER_PISTON G_H-FLO 2 S	1	AUX322089	■	
39200	◆	SET CYLINDER_PISTON G_H-FLO 3 S	1	AUX322088	■	
39118		INDEXER	(1)			
39201		CYLINDER	(1)			●
39301		PISTON	(1)			●
39304	◆	PISTON NUT G_H-FLO 1_2_3 S	1	AUX245018		●
39304A		SCREW	(3)			
39206	◆	SET OF FKM CE1935/2004 'O' RING SEALS G_H-FLO 1_2_3 S	1	AUX321969	■	
39206	◆	SET OF CVT CE1935/2004 'O' RING SEALS G_H-FLO 1_2_3 S	1	AUX321970	■	
39206	◆	SET OF EPDM CE1935/2004 'O' RING SEALS G_H-FLO 1_2_3 S	1	AUX321971	■	
39113		SEAL	(1)			●
39113A		SEAL	(1)			●
39205		SEAL	(1)			●
39305		SEAL	(1)			●
39306		SEAL	(1)			●
39401	◆	FRONT COVER COMPLETE G-FLO 1_2_3 S - PN16	1	AUX322000		
39401	◆	FRONT COVER COMPLETE G-FLO 1_2_3 S - PN20	1	AUX322001		

G-FLO 1 S - G-FLO 2 S - G-FLO 3 S

* 1, 2, 4... : Quantity in equipment - (1), (2), (4)... : Quantity in kit

Item	Available	Description	Qty*	Ref.	Maintenance kit	Wear part
G FLO 1_2_3 S COMPLETE TRANSMISSION :						
FOR MOTOR FLANGE PUMP						
STANDARD						
39596	◆	STANDARD	1	AUX322046	■	
39596*	◆	STANDARD_ECS	1	AUX322049	■	
39596*	◆	STANDARD_ECS_OIL LEVEL SENSOR	1	AUX322050	■	
39596*	◆	STANDARD_ATEX_ECS_OIL LEVEL SENSOR	1	AUX322051	■	
WITH BELLOWS MONITORING SYSTEM (BMS)						
39596*	◆	BMS	1	AUX322047	■	
39596*	◆	BMS_ECS	1	AUX322052	■	
39596*	◆	BMS_ECS_OIL LEVEL SENSOR	1	AUX322053	■	
WITH BELLOWS MONITORING SYSTEM (BMS) ATEX						
39596*	◆	BMS ATEX	1	AUX322048	■	
39596*	◆	BMS ATEX_ECS	1	AUX322054	■	
39596*	◆	BMS ATEX_ECS_OIL LEVEL SENSOR	1	AUX322055	■	
FOR BARE SHAFT PUMP						
STANDARD						
39596	◆	STANDARD	1	AUX322026	■	
39596*	◆	STANDARD_ECS	1	AUX322029	■	
39596*	◆	STANDARD_ECS_OIL LEVEL SENSOR	1	AUX322030	■	
39596*	◆	STANDARD_ATEX_ECS_OIL LEVEL SENSOR	1	AUX322031	■	
WITH BELLOWS MONITORING SYSTEM (BMS)						
39596*	◆	BMS	1	AUX322027	■	
39596*	◆	BMS_ECS	1	AUX322032	■	
39596*	◆	BMS_ECS_OIL LEVEL SENSOR	1	AUX322033	■	
WITH BELLOWS MONITORING SYSTEM (BMS) ATEX						
39596*	◆	BMS ATEX	1	AUX322028	■	
39596*	◆	BMS ATEX_ECS	1	AUX322034	■	
39596*	◆	BMS ATEX_ECS_OIL LEVEL SENSOR	1	AUX322035	■	
39009A	◆	BEARING GASKETS_RINGS SET G_H-FLO 1_2_3 S	1	AUX321993		
39498		BUSHING	(1)			●
39507		SEAL RING	(1)			●
39518		SEAL	(1)			●
39602		SEAL	(1)			●
39608		LIP SEAL	(1)			●
39608A		LIP SEAL	(1)			●
39610		CIRCLIPS	(1)			
39749	◆	KIT EASY CLEAN SYSTEM (ECS) G_H-FLO 1_2_3_6_8	1	AUX321711		
39748	◆	SET SEAL FOR ECS G_H-FLO 1_2_3_6_8	1	AUX321709		

* ECS : EASY CLEAN SYSTEM - BMS : BELLOWS MONITORING SYSTEM

H-FLO 1 S - H-FLO 2 S - H-FLO 3 S

* 1, 2, 4... : Quantity in equipment - (1), (2), (4)... : Quantity in kit

Item	Available	Description	Qty*	Ref.	Maintenance kit	Wear part
39100	◆	MAIN BODY H-FLO 1_2_3 - CONNECTIONS SMS	1	AUX322007		
39100	◆	MAIN BODY H-FLO 1_2_3 - CONNECTIONS DIN 11851	1	AUX322008		
39100	◆	MAIN BODY H-FLO 1_2_3 - CONNECTIONS CLAMP ASME-BPE	1	AUX322009		
39100	◆	MAIN BODY H-FLO 1_2_3 - CONNECTIONS CLAMP ISO 2852	1	AUX322010		
39100	◆	MAIN BODY H-FLO 1_2_3 - CONNECTIONS DIN 11864	1	AUX322011		
39100	◆	JACKETED MAIN BODY H-FLO 1_2_3 - CONNECTIONS SMS	1	AUX322014		
39100	◆	JACKETED MAIN BODY H-FLO 1_2_3 - CONNECTIONS DIN 11851	1	AUX322015		
39100	◆	JACKETED MAIN BODY H-FLO 1_2_3 - CONNECTIONS CLAMP ASME-BPE	1	AUX322016		
39100	◆	JACKETED MAIN BODY H-FLO 1_2_3 - CONNECTIONS CLAMP ISO 2852	1	AUX322017		
39100	◆	JACKETED MAIN BODY H-FLO 1_2_3 - CONNECTIONS DIN 11864	1	AUX322018		
39100	◆	POLISH MAIN BODY H-FLO 1_2_3 - CONNECTIONS SMS	1	AUX322021		
39100	◆	POLISH MAIN BODY H-FLO 1_2_3 - CONNECTIONS DIN 11851	1	AUX322022		
39100	◆	POLISH MAIN BODY H-FLO 1_2_3 - CONNECTIONS CLAMP ASME-BPE	1	AUX322023		
39100	◆	POLISH MAIN BODY H-FLO 1_2_3 - CONNECTIONS CLAMP ISO 2852	1	AUX322024		
39100	◆	POLISH MAIN BODY H-FLO 1_2_3 - CONNECTIONS DIN 11864	1	AUX322025		
39101		MAIN BODY	(1)			
39124		PLUG (JACKETED PUMP)	(1)			
39110	◆	SCREWS SET FOR MAIN BODY_FRONT COVER G_H-FLO 1_2_3 S	1	AUX321992		
39105		STUD	(2)			
39106		BLIND NUT	(8)			
39107		STUD	(2)			
39111		STUD	(4)			
39115		BLIND NUT	(4)			
39200	◆	SET CYLINDER_PISTON G_H-FLO 1 S	1	AUX322090	■	
39200	◆	SET CYLINDER_PISTON G_H-FLO 2 S	1	AUX322089	■	
39200	◆	SET CYLINDER_PISTON G_H-FLO 3 S	1	AUX322088	■	
39118		INDEXER	(1)			
39201		CYLINDER	(1)			●
39301		PISTON	(1)			●
39304	◆	PISTON NUT G_H-FLO 1_2_3 S	1	AUX245018		●
39304A		SCREW	(3)			
39206	◆	SET OF FKM CE1935/2004 'O' RING SEALS G_H-FLO 1_2_3 S	1	AUX321969	■	
39206	◆	SET OF CVT CE1935/2004 'O' RING SEALS G_H-FLO 1_2_3 S	1	AUX321970	■	
39206	◆	SET OF EPDM CE1935/2004 'O' RING SEALS G_H-FLO 1_2_3 S	1	AUX321971	■	
39113		SEAL	(1)			●
39113A		SEAL	(1)			●
39205		SEAL	(1)			●
39305		SEAL	(1)			●
39306		SEAL	(1)			●
39401	◆	FRONT COVER H-FLO 1_2_3 - CONNECTION SMS	1	AUX321995		
39401	◆	FRONT COVER H-FLO 1_2_3 - CONNECTION DIN11851	1	AUX321996		
39401	◆	FRONT COVER H-FLO 1_2_3 - CONNECTION CLAMP ASME BPE-2009	1	AUX321997		
39401	◆	FRONT COVER H-FLO 1_2_3 - CONNECTION CLAMP ISO 2852	1	AUX321998		
39401	◆	FRONT COVER H-FLO 1_2_3 - CONNECTION DIN11864	1	AUX321999		
39401	◆	POLISH FRONT COVER H-FLO 1_2_3 - CONNECTIONS SMS	1	AUX322002		
39401	◆	POLISH FRONT COVER H-FLO 1_2_3 - CONNECTIONS DIN 11851	1	AUX322003		
39401	◆	POLISH FRONT COVER H-FLO 1_2_3 - CONNECTIONS CLAMP ASME-BPE	1	AUX322004		
39401	◆	POLISH FRONT COVER H-FLO 1_2_3 - CONNECTIONS CLAMP ISO 2852	1	AUX322005		
39401	◆	POLISH FRONT COVER H-FLO 1_2_3 - CONNECTIONS DIN 11864	1	AUX322006		

H-FLO 1 S - H-FLO 2 S - H-FLO 3 S

* 1, 2, 4... : Quantity in equipment - (1), (2), (4)... : Quantity in kit

Item	Available	Description	Qty*	Ref.	Maintenance kit	Wear part
H FLO 1_2_3 S COMPLETE TRANSMISSION :						
FOR MOTOR FLANGE PUMP						
STANDARD						
39596	◆	STANDARD	1	AUX322056	■	
39596*	◆	STANDARD_ECS	1	AUX322059	■	
39596*	◆	STANDARD_ECS_OIL LEVEL SENSOR	1	AUX322060	■	
39596*	◆	STANDARD_ATEX_ECS_OIL LEVEL SENSOR	1	AUX322061	■	
WITH BELLOWS MONITORING SYSTEM (BMS)						
39596*	◆	BMS	1	AUX322057	■	
39596*	◆	BMS_ECS	1	AUX322062	■	
39596*	◆	BMS_ECS_OIL LEVEL SENSOR	1	AUX322063	■	
WITH BELLOWS MONITORING SYSTEM (BMS) ATEX						
39596*	◆	BMS ATEX	1	AUX322058	■	
39596*	◆	BMS ATEX_ECS	1	AUX322064	■	
39596*	◆	BMS ATEX_ECS_OIL LEVEL SENSOR	1	AUX322065	■	
FOR BARE SHAFT PUMP						
STANDARD						
39596	◆	STANDARD	1	AUX322036	■	
39596*	◆	STANDARD_ECS	1	AUX322039	■	
39596*	◆	STANDARD_ECS_OIL LEVEL SENSOR	1	AUX322040	■	
39596*	◆	STANDARD_ATEX_ECS_OIL LEVEL SENSOR	1	AUX322041	■	
WITH BELLOWS MONITORING SYSTEM (BMS)						
39596*	◆	BMS	1	AUX322037	■	
39596*	◆	BMS_ECS	1	AUX322042	■	
39596*	◆	BMS_ECS_OIL LEVEL SENSOR	1	AUX322043	■	
WITH BELLOWS MONITORING SYSTEM (BMS) ATEX						
39596*	◆	BMS ATEX	1	AUX322038	■	
39596*	◆	BMS ATEX_ECS	1	AUX322044	■	
39596*	◆	BMS ATEX_ECS_OIL LEVEL SENSOR	1	AUX322045	■	
39009A	◆	BEARING GASKETS_RINGS SET G_H-FLO 1_2_3 S	1	AUX321993		
39498		BUSHING	(1)			●
39507		SEAL RING	(1)			●
39518		SEAL	(1)			●
39602		SEAL	(1)			●
39608		LIP SEAL	(1)			●
39608A		LIP SEAL	(1)			●
39610		CIRCLIPS	(1)			
39749	◆	KIT EASY CLEAN SYSTEM (ECS) G_H-FLO 1_2_3_6_8	1	AUX321711		
39748	◆	SET SEAL FOR ECS G_H-FLO 1_2_3_6_8	1	AUX321709		

* ECS : EASY CLEAN SYSTEM - BMS : BELLOWS MONITORING SYSTEM